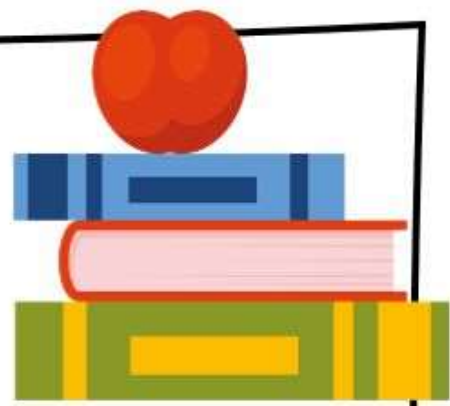


OUR CLASSROOM newsletter



Week 1



MooreAn2@boe.richmond.k12.ga.us



School Phone - (706)821-2766

ASSIGNMENTS

Fundations Orientation Guide (3 Days) - Please read over the pamphlet located in your child's folder to familiarize yourself with the Fundations phonics program.

Fundations Unit 1 - Week 1 Home Support Guide - Begin on Thursday 8/7/25 - For the next three weeks, your child will practice writing the letters in lower-case. Practice some letters each night, as indicated below. Have your child write each of these letters five times on the Writing Grid

Day 1 - 8/7/25 (Thursday)

Day 2 & 3 - 8/11/25 (Monday)

Day 4 - 8/12/25 (Tuesday)

All students will receive the Orientation guide and Unit 1 guide. It will be located in your child's folder. Please place it in a secure place. You will need the guide for the next three weeks.

WEEK 1	
Day 1	t b f
Day 2	n m
Day 3	i u
Day 4	c o

Standards

*Review our rituals and routines - SOAR Matrix

LANGUAGE ARTS:

- Unit 1 Pretest Administered
 - Fundations - Review letter formations/ Letter-Keyword-Sounds- Week 1
- Unit 1 begins on Thursday -

MATH:

- Lesson 0: Try- Discuss- Connect Routine/ GADOE Learning Plan - Investigate Numbers/ Number Talks
- Unit 1 Pretest Administered

SCIENCE:

- Think Like A Scientist

SOCIAL STUDIES:

- Welcome to 1st Grade
- Digital Citizenship Lessons will be completed this week.

REMINDERS

Check Infinite Campus weekly to stay informed about your child's grades.

Read a book for at least 10-15 minutes per night.

UPCOMING EVENTS

iReady Beginning of Year Diagnostic-
(Tentatively Scheduled) - Reading 8/13/25
Math 8/14/25 - Makeups 8/15/25 (Please make sure your child has a pair of headphones)